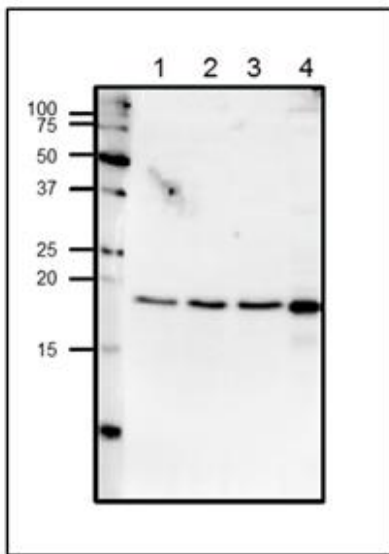


Anti- Centrin 1 antibody, rabbit polyclonal

Product code	70-110
Size	100 µg
Storage	-20°C
Concentration	1.0 mg/ml
Buffer	PBS- with 50% glycerol
Purity	Affinity purified with immunogen peptide from rabbit antiserum.
Immunogen	Synthetic peptide conjugated to KLH, with a Cysteine residue linker corresponding to C terminal amino acids 155-168 (C-GEVNEEEEFLRIMKK) of Human centrin-1
Isotype	Rabbit IgG
Reactivity	human, mouse, rat, hamster and xenopus
Special notes	N/A
Application	1) Western blotting (1/1,000 dilution) 2) Immunofluorescence staining (1/100~1/1000 dilution)
Background	Centrin 1(human; 172 aa, MW; 19,570) plays a fundamental role in microtubule organizing center structure and function. Centrins, also known as caltractins, are a family present in the centrioles and pericentriolar lattice. Human centrin genes are CETN1, CETN2 and CETN3. Centrins are required for duplication of centrioles. They may also play a role in severing of microtubules by causing calcium-mediated contraction.
Data Link	UniProtKB Q12798 (CETN1_HUMAN). GeneCard CETN1 .
Please note: All products are FOR RESEARCH USE ONLY. NOT FOR USE IN DIAGNOSTIC PROCEDURES. NOT FOR MILITARY USE.	

Data Images: 70-110 Anti-Centrin1 antibody, rabbit polyclonal



ig.1 Western blot analysis of endogenous centrin-1 in crude lysates.

1. HeLa cells (20 μ g)
2. MCF7 cells (20 μ g)
3. NIH3T3 cells (20 μ g)
4. Xenopus eggs (50 μ g)

The anti-Centrin 1 antibody was used at 1/1,000 dilution. Molecular mass is 19.6 kDa

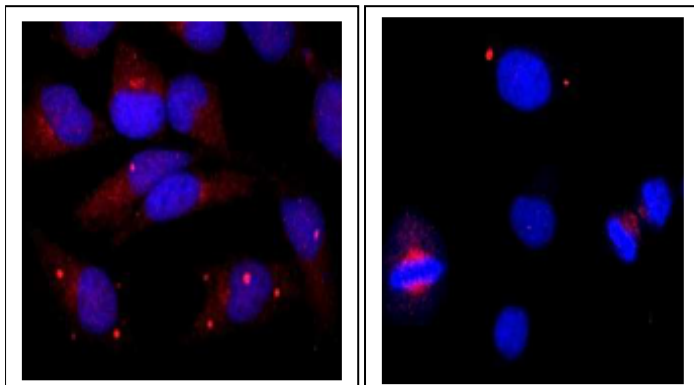


Fig.2. Immunofluorescence staining of centrin-1 protein in HeLa cells with anti-Centrin 1 antibody. Growing HeLa cells were fixed with 4% paraformaldehyde, and permeabilized with 0.25% Triton X-100. Anti-Centrin 1 antibody was used at 1/100 dilution. As 2nd antibody, goat anti-rabbit IgG conjugated with Alex 488 (red) at 1/1,000 dilution. DNA was stained with DAPI (blue).