

Anti-Rpn1(*S. cerevisiae*) antibody, rabbit serum

Product code	62-200
Size	100 µl
Storage	Store at 4°C for short term. For long term storage store at -20°C. Aliquot to avoid repeated freezing and thawing.
Concentration	N/A
Buffer	0.1% sodium azide
Purity	Rabbit antiserum
Immunogen	Synthetic peptide corresponding to a C-terminal region of Rpn1 (849~860)
Isotype	Rabbit IgG
Reactivity	<i>S. cerevisiae</i> Rpn1/Nas1 protein Not tested with other species.
Special notes	N/A
Application	1. Western blotting (1/1000-1/2000) Not tested for other applications
Background	The 26 S proteasome is a protein complex with a molecular mass of ~2,000 kDa. It is essential not only for eliminating damaged or misfolded proteins but also for degrading short lived regulatory proteins involved in cell cycle regulation, DNA repair, signal transduction, apoptosis, and metabolic regulation (1). The 26S proteasome is composed of the 20S core particle (CP) and the 19S regulatory particle (RP). The RP is further subdivided into lid and base sub-complexes. Rpn1 is a proteasome-interacting protein which acts as a chaperon to assemble the base sub-complex of the 19S RP. Rpn1 is composed of 993 amino acid residues with calculated molecular masses of 109 kDa .
Data Link	UniProtKB P38764 (RPN1_YEAST)
Please note: All products are FOR RESEARCH USE ONLY. NOT FOR USE IN DIAGNOSTIC PROCEDURES. NOT FOR MILITARY USE.	

Data Images: 62-200 Anti-Rpn1 (*S. cerevisiae*) antibody, rabbit serum

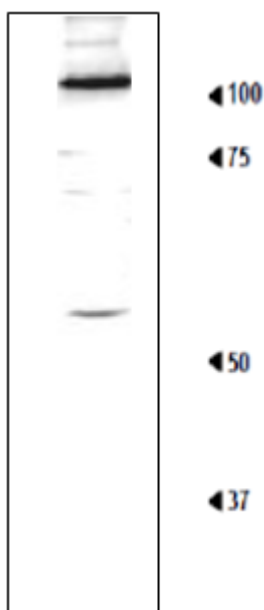


Fig.1 Detection of Rpn1 in the crude extract of *S. cerevisiae* by Western blotting using this antibody.

Crude cell extract of *S. cerevisiae* (20 µg) was analysed by western blotting using anti-Rpn1 antibody at 1/1,000 dilution. Blotting should be done in wet system. Molecular mass of Rpn1 is 109 kDa

References:

Tsurumi C. et al. cDNA cloning and functional analysis of the p97 subunit of the 26S proteasome, a polypeptide identical to the type-1 tumor-necrosis-factor-receptor-associated protein-2/55.11. [Eur J Biochem.](#) 1996 239(3):912-21. PMID: 8774743

Related products:

- 62-201 anti-Rpn3 (*S. cerevisiae*) antibody, rabbit polyclonal
- 62-203 anti-Rpn5 (*S. cerevisiae*) antibody, rabbit polyclonal
- 62-205 anti-Rpn7 (*S. cerevisiae*) antibody, rabbit polyclonal
- 62-207 anti-Rpn9 (*S. cerevisiae*) antibody, rabbit polyclonal
- 62-209 anti-Rpn12 (*S. cerevisiae*) antibody, rabbit polyclonal
- 62-211 anti-Nob1 (*S. cerevisiae*) antibody, rabbit polyclonal
- 62-213 anti-Nas6/p28 (*S. cerevisiae*) antibody, rabbit polyclonal
- 62-215 anti-Tem1 (*S. cerevisiae*) antibody, rabbit polyclonal