

Anti-Nas6/p28(*S. cerevisiae*) antibody, rabbit polyclonal

Product code	62-213
Size	100 µl
Storage	-20°C
Concentration	N/A
Buffer	1 mg/ml BSA, 0.09 % sodium azide and 50% glycerol in PBS-
Purity	IgG fraction purified with recombinant Nas6 from rabbit antiserum
Immunogen	Recombinant yeast Nas6 expressed in <i>E. coli</i>
Isotype	Rabbit IgG
Reactivity	<i>S. cerevisiae</i> Nas6 protein Not tested with other species.
Special notes	N/A
Application	1. Western blotting (-1/5000) (Fig.1) 2. Immunoprecipitation Not tested for other applications
Background	The 26 S proteasome is a protein complex with a molecular mass of ~2,000 kDa. It is essential not only for eliminating damaged or misfolded proteins but also for degrading short lived regulatory proteins involved in cell cycle regulation, DNA repair, signal transduction, apoptosis, and metabolic regulation (1). The 26S proteasome is composed of the 20S core particle (CP) and the 19S regulatory particle (RP). The RP is further subdivided into lid and base sub-complexes. NAS6 (p28) is a proteasome-interacting protein which acts as a chaperon to assemble the base sub-complex of the 19S RP (2). NAS6 is composed of 226 amino acid residues with calculated molecular masses of 24.4kD (3).
Data Link	SGD NAS6/YGR232W
Please note: All products are FOR RESEARCH USE ONLY. NOT FOR USE IN DIAGNOSTIC PROCEDURES. NOT FOR MILITARY USE.	

Data Images: 62-213 Anti-Nas6/p28 (*S. cerevisiae*) antibody, rabbit polyclonal

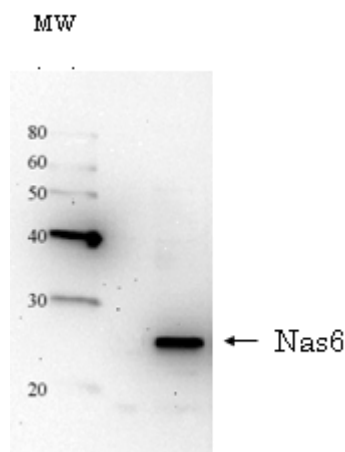


Fig.1 Detection of Nas6 in the crude extract of *S. cerevisiae* by Western blotting using this antibody.

Reference:

1. Hershko A and Ciechanover A "THE UBIQUITIN SYSTEM" *Annu Rev Biochem* **67**: 425-479 (1998) PMID: [9759494](#)
2. Saeki Y *et al* "Multiple proteasome-interacting proteins assist the assembly of the yeast 19S regulatory particle" *Cell* **137**:900-913 (2009) PMID: [19446323](#)
3. Hori T *et al* "cDNA cloning and functional analysis of p28 (Nas6p) and p40.5 (Nas7p), two novel regulatory subunits of the 26S proteasome" *Gene* **216**:113-122 (1998) PMID: [9714768](#)

Related products:

- 62-200 anti-Rpn1 (*S. cerevisiae*) antibody, rabbit serum
- 62-201 anti-Rpn3 (*S. cerevisiae*) antibody, rabbit polyclonal
- 62-203 anti-Rpn5 (*S. cerevisiae*) antibody, rabbit polyclonal
- 62-205 anti-Rpn7 (*S. cerevisiae*) antibody, rabbit polyclonal
- 62-207 anti-Rpn9 (*S. cerevisiae*) antibody, rabbit polyclonal
- 62-209 anti-Rpn12 (*S. cerevisiae*) antibody, rabbit polyclonal
- 62-211 anti-Nob1 (*S. cerevisiae*) antibody, rabbit polyclonal
- 62-215 anti-Tem1 (*S. cerevisiae*) antibody, rabbit polyclonal