

Anti-IZUMO1 antibody, rabbit serum

Product code	73-042
Size	100 µl
Storage	Store 4°C for short term For long term storage store at -20°C. Aliquot to avoid repeated freezing and thawing.
Concentration	N/A
Buffer	0.1% sodium azide
Purity	Rabbit antiserum
Immunogen	KLH-conjugated synthetic peptides corresponding to the following three regions of human IZUMO 1. [A] C+KSLEKDYLPGHLDA [B] C+TQVPKEKATDSRQQ [C] C+ATTESSISLQPLQ
Isotype	Rabbit IgG
Reactivity	Human and mouse. Not tested with other species.
Special notes	N/A
Application	1. Western blotting (1/1,000 dilution) 2. Immunofluorescence staining (1/100~1/300 dilution) 3. Immunohistochemistry (1/100 dilution) 4. Inhibition of sperm fusion with egg
Background	Essential sperm cell-surface protein required for fertilization by acting as a ligand for FOLR4/JUNO receptor on egg. The IZUMO1:FOLR4/JUNO interaction is a necessary adhesion event between sperm and egg that is required for fertilization but is not sufficient for cell fusion. The ligand-receptor interaction probably does not act as a membrane 'fusogen' Molecular mass: 44,885 Da with 307 amino acids. Post-translational modification: Processing of N-terminal signal peptide with 21 amino acids. N-Glycosylation and phosphorylation. Expression: This gene has expression in 4 organs : EMAPA:18202 : epidermis , EMAPA:16105 : heart , MA:0000412 : seminiferous tubule , MA:0000411 : testis
Data Link	UniProtKB Q8IYV9 (human IZUMO1), UniProtKB Q9D9J7 (mouse IZUMO1)
Please note: All products are FOR RESEARCH USE ONLY. NOT FOR USE IN DIAGNOSTIC PROCEDURES. NOT FOR MILITARY USE.	

Data Images: Anti-IZUMO1 antibody, rabbit serum

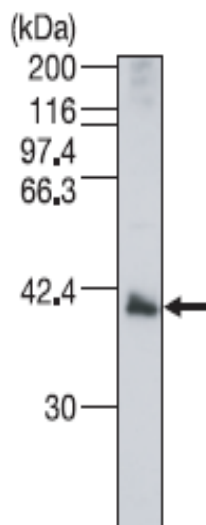


Fig.1 Identification of IZUMO1 protein in the lysate of human sperm by western blotting with anti-IZUMO1 antibody.

Proteins in the lysate (20 μ g) was separated on SDS-PAGE, blotted to PVDF membrane and reacted with anti-human IZUMO1 antibody at 1/1,000 dilution.

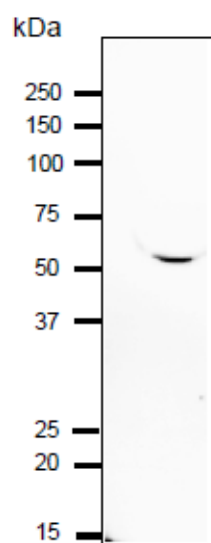


Fig.2 Analysis of IZUMO1 protein in the lysates of mouse sperm by western blotting with polyclonal anti- IZUMO1 antibody.

Proteins in the lysates (10 μ g) was separated on SDS-PAGE (10~20% gradient gel), blotted to PVDF membrane and reacted with the polyclonal anti-IZUMO1 antibody at 1/1,000 dilution.

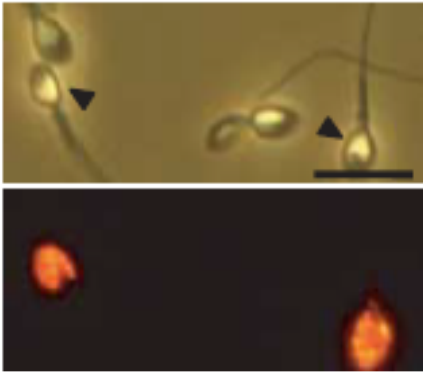


Fig.3 Immunostaining of IZUMO1 in human sperm using polyclonal anti-IZUMO1 antibody.

Human sperm on slide was incubated with polyclonal anti-IZUMO1 antibody at 1/100 dilution and reacted with a second antibody, Alexa Fluor 594-conjugated anti-rabbit IgG antibody at 1/1,000 (lower panel).

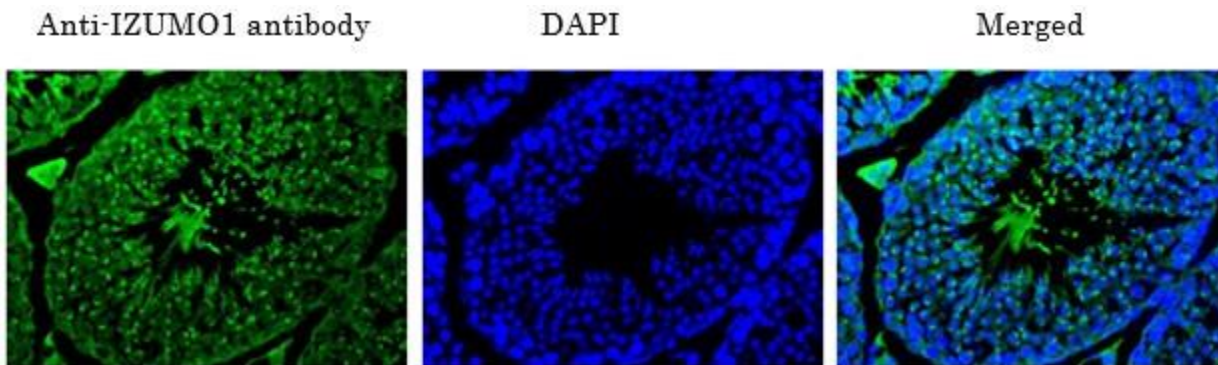


Fig.4. Immunohistochemistry of mouse testis using anti-IZUMO1 antibody.

Formalin-fixed and paraffin-embedded mouse testis

Deparaffinization by LemosolRA (#122-03991,Wako, Osaka)

Rehydration 100% EtOH, 95%, 90%, 70%, DW

Antigen retrieval Histo/Zyme (Cat.# k046; Diagnostic BioSystems)

Washing PBST (0.25% triton X-100/PBS-)

Blocking 10 % FBS / PBST 30 min

1st antibody 1/100 dilution in PBS- 4°C O/N

Washing PBS- 5 min, 3 times

2nd antibody 1,000 dilution, 60 min (Alexa Flour-488 goat anti-rabbit IgG (H&L), #1166843 ; Molecular Probes)

Washing PBS- 5 min, 3 times

DAPI 1.0µg/mL DAPI in TBS 10 min

Reference: This antibody was described and used in the following publication.

1. Inoue N. et al. (2005) The immunoglobulin superfamily protein Izumo is required for sperm to fuse with eggs. *Nature*. 434:234-8. PubMed [15759005](#)