

Anti-VPS35 (At) antibody, rabbit polyclonal

Product code	81-124
Size	200 µg
Storage	-20°C
Concentration	2.0 mg/ml
Buffer	PBS ⁻ with 50% glycerol
Purity	Purified IgG fraction with protein A from rabbit antiserum.
Immunogen	Recombinant His6-VPS35b (about 7/8 of the coding region) of <i>Arabidopsis thaliana</i> .
Isotype	Rabbit IgG
Reactivity	<i>Arabidopsis thaliana</i> . Not tested in other species.
Special notes	N/A
Application	<ol style="list-style-type: none"> 1. Western blotting (1/1,000) 2. Immunoprecipitation (1/100) 3. Immunofluorescent staining (1/400) 4. ELISA (assay dependent)
Background	<p>VPS35 (Vacuolar Protein Sorting-associated protein 35) plays a role in vesicular protein sorting. Component of the membrane-associated retromer complex which is essential in endosome-to-Golgi retrograde transport. Also involved in the efficient sorting of seed storage proteins globulin 12S and albumin 2S. The VPS29-VPS26-VPS35 subcomplex may be involved in recycling of specific cargos from endosome to the plasma membrane. <i>Arabidopsis thaliana</i> has three VPS35 homologs designated VPS35a, VPS35b and VPS35c, and among them, VPS35b plays most important role in these processes. VPS35b consists of 790 aa with mol mass, 89.4 kDa.</p> <p>Subcellular localization: Localized in pre-vacuolar compartments (PVC).</p>
Data Link	UniProtKB F420P8 (VP35B_ARATH)
Please note: All products are FOR RESEARCH USE ONLY. NOT FOR USE IN DIAGNOSTIC PROCEDURES. NOT FOR MILITARY USE.	

Data Images: 81-124 Anti-VPS35 (At) antibody, rabbit polyclonal

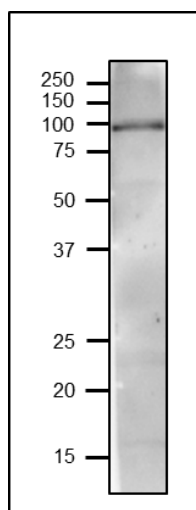


Fig.1 Western blot of VPS35 in extract of Arabidopsis seedlings

Crude extract of *Arabidopsis thaliana* 19-day seedlings was run on SDS-PAGE (12.5% gel) and blotted to PVDF membrane by wet system. Blocking was done with 3% skim milk. The anti-VPS35b antibody was used at 2.0 µg/ml. Secondary antibody (goat anti-rabbit IgG antibody HRP-conjugated, ab97051) was used at 1/10,000 dilution.

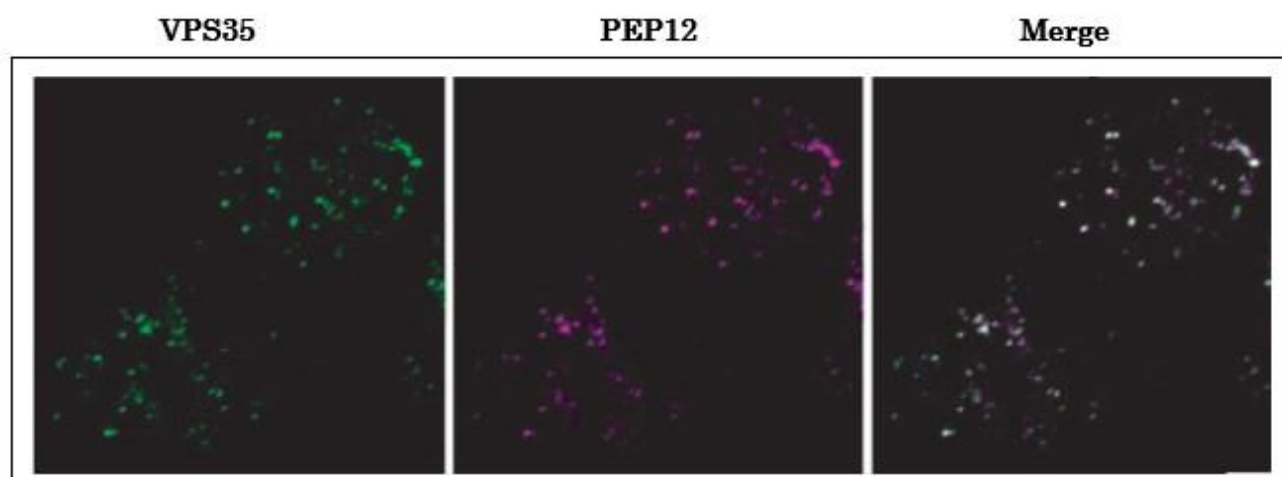


Fig.2 Localization of VPS35 as revealed by immunofluorescent staining

Tobacco NY-2 cells transformed with Arabidopsis VPS35b and PEP 12 genes were reacted with anti-VPS35b (green) and PEP12 (magenta, a PVC marker) antibodies. VPS35b is colocalized with PEP12 in pre-vacuolar compartments (PVC).

Reference. This antibody was described and used in the following publications.

1. Shimada T et al. AtVPS29, a putative component of a retromer complex, is required for the efficient sorting of seed storage proteins. [Plant Cell Physiol.](#) 2006 Sep;47(9):1187-94. PMID: [16926167](#). **WB (Arabidopsis)**
2. Yamazaki M et al. Arabidopsis VPS35, a retromer component, is required for vacuolar protein sorting and involved in plant growth and leaf senescence. [Plant Cell Physiol.](#) 2008 Feb;49(2):142-56. PMID: [18222962](#) **WB, IP, IF (Arabidopsis),**

Related Products

81-125 Anti-VPS29 (At) antibody, rabbit polyclonal