

***E. coli* LexA Repressor, functional**

01-005 20 µg, 01-006 100 µg

Storage: Shipped on dry ice. Store at -80°C. Avoid freeze / thaw cycles.

Product: Recombinant full-size LexA protein without tag.

Applications

- 1) Functional studies on the mechanism of *E. coli* SOS response. This product binds to SOS box in vitro and repress the expression of the genes belonging to SOS regulon.
- 2) WB. Used as an antigen for positive control in Western blotting to confirm that the Bait construct is expressed stably in the yeast two-hybrid method using the *lexA* gene. See also antibody to LexA protein (#61-001)
- 3) Chromatin immuno-precipitation in combination with anti-LexA antibody (#61-001)

Form: 50% glycerol, 10 mM Tris-HCl (pH 7.5), 2 mM EDTA, 100 mM NaCl, 1 mM DTT

Purity: Over 90% by SDS-PAGE (CBB staining)

Protein concentration: 1.0 mg/ml as measured by BCA method

Background: *E. coli* LexA protein inhibits the transcription of the genes belonging to the SOS regulon that are related to DNA repair and cell division by recognizing and binding to the SOS-box sequence (TACTGTATATATATACAGTA). LexA's self-protease activity is promoted by RecA protein which, responding to DNA damage, is activated by its binding to single-strand DNA accumulated in the cells. It is cleaved into two fragments and loses its function as a repressor. As a result, the expression of genes belonging to the SOS regulon is induced, and DNA repair ability and mutagenic activity in the cells are enhanced (1).

Data Link UniProtKB/Swiss-Prot [P0A7C2](#) (LEXA_ECOLI)

References:

1. Waker GC "Understanding the complexity of an organism's responses to DNA damage." 2000) PMID: [12760015](#)
2. Sambrook J & Russell DW Molecular Cloning 3rd Ed. Chapter 18. 17-18.27 Cold Spring Harbor Laboratory Press (2001)

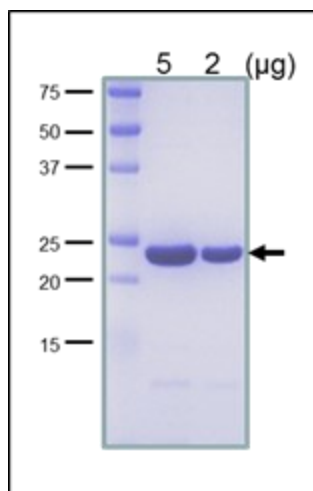


Figure. SDS-PAGE analysis of the purified LexA protein.



Please note: All products are FOR RESEARCH USE ONLY. NOT FOR USE IN DIAGNOSTIC PROCEDURES. NOT FOR MILITARY USE.