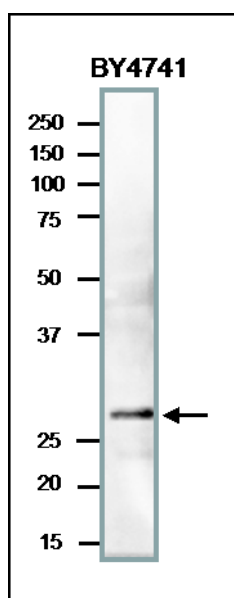


Anti- PCNA (*S.cerevisiae*) antibody, rabbit polyclonal, ChIP grade62-160 100 μ g**Storage:** Shipped at 4°C and store at -20°C (avoid freezing by storing below -25°C)**Reactivity:** *Saccharomyces cerevisiae***Immunogen:** Recombinant full-size PCNA (*S. cerevisiae*, 1-258 aa)**Applications:**

1. Western blotting (1/500-1/1,000 dilution)
2. Immuno-precipitation (1/100)
3. Chromatin Immuno-Precipitation (Assay dependent)

Form: Purified IgG, 2 mg/ml in PBS, 50% glycerol. Filter sterilized. No preservative nor carrier protein added.**Background:** This protein is an auxiliary protein of DNA polymerase delta and is involved in the control of eukaryotic DNA replication by increasing the polymerase's processibility during elongation of the leading strand. Involved in DNA repair and recombination. It consists of 258 amino acids with MW of 28,916**Data Link:** UniProt [P15873](https://www.uniprot.org/entry/P15873) (PCNA_YEAST)**Fig.1 Western Blot of PCNA in crude extract of *S. cerevisiae***

The antibody was used at 1/1,000 dilution. Molecular mass of PCNA is 29 kDa. Crude extract of *S. cerevisiae* strain BY4741 (20 μ g) applied.

Reference: This antibody has been used in the following publications.

1. Iida T. et al. PCNA clamp facilitates action of DNA cytosine methyltransferase 1 on hemimethylated DNA. [Genes Cells](#). 2002 Oct;7(10):997-1007. **IP**
2. Hishida T. et al. Functional and physical interaction of yeast Mgs1 with PCNA: impact on RAD6-dependent DNA damage tolerance. [Mol Cell Biol](#). 2006 Jul; 26(14):5509-17. **WB**
3. Ogihara H. et al. The INO80 chromatin remodeling complex functions in sister chromatid cohesion. [Cell Cycle](#). 2007 May 2;6(9):1090-5. **ChIP**
4. Ogiwara H. et al. Role of Elg1 protein in double strand break repair. [Nucleic Acids Res](#). 2007;35(2):353-62. **ChIP**

Related product: [#10-151](#) PCNA protein (human), functional

[#70-080](#) Anti-PCNA antibody, rabbit polyclonal (Reacts with mammals, chicken, xenopus)