

Anti-Mcm5 (*S. pombe*) antibody, rabbit polyclonal

63-022 100 µg

Shipment and Storage: Ship at 4°C and store at -20°C. Do not freeze below -20°C

Immunogen: Recombinant His6-Mcm5 (1-279 amino acids) of *S. pombe*.

Reactivity: React with *S. pombe* Mcm5 protein.

Applications:

1. Western blot (1/2,000) Not tested for other applications.

Form: 2 mg/ml. IgG, affinity-purified with Protein A, in PBS, 50% glycerol. Sterilized by ultra-filtration..

Background: Mcm5 acts as a component of mcm2-7 complex which is the putative replicative helicase essential for 'once per cell cycle' DNA replication initiation and elongation in eukaryotic cells. (Calculated Molecular Mass: 80.1 kDa)

Subcellular location: Nucleus

Data Link: UniProtKB [41389](#) (*S. pombe* Mcm5)

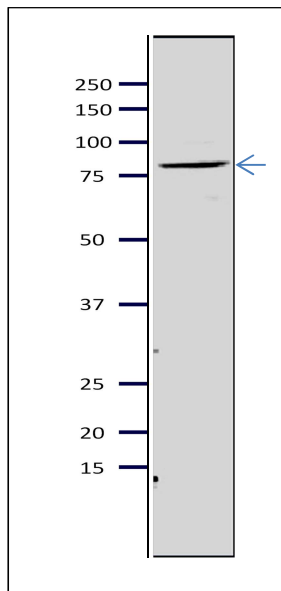


Fig.1 Western blot of Mcm5 protein in *S. pombe* crude extract
Anti-Mcm5 antibody was used at 1/2000 dilution. Second antibody (goat anti-rabbit IgG antibody, HRP-conjugated, ab97051) was used at 1/10,000 dilution. *S. pombe* extract, 8 µg.

References: This product has been used in the following publications.

1. Yamada Y et al. A Novel Intermediate in Initiation Complex Assembly for Fission Yeast DNA Replication. [Mol Biol Cell](#). 2004 Aug;15(8):3740-50. PMID: [15194812](#).
WB (*S. pombe*)

2. Kanke M et al. Auxin-inducible protein depletion system in fission yeast. [BMC Cell Biol.](#) 2011 Feb 11;12:8. PMID: [21314938](#) . WB (S. pombe)
3. Santosa V et al. The Fission Yeast Minichromosome Maintenance (MCM)-binding Protein (MCM-BP), Mcb1, Regulates MCM Function during Prereplicative Complex Formation in DNA Replication. [J Biol Chem.](#) 2013 Mar 8;288(10):6864-80. PMID: [23322785](#). WB (S. pombe)

Related Products.

- 63-020 Anti-Mcm2 (S. pombe) antibody
- 63-021 Anti-Mcm3 (S. pombe) antibody
- 63-023 Anti-Mcm6 (S. pombe) antibody
- 63-024 Anti-Mcm7 (S. pombe) antibody
- 63-030 Anti-Psf1 (S. pombe) antibody
- 63-032 Anti-Psf3 (S. pombe) antibody
- 63-035 Anti-Sld5 (S. pombe) antibody
- 63-037 Anti-Ssb2 / Rpa2 (S.pombe) antibody
- 63-041 Anti-Orc2 (S. pombe) antibody
- 63-043 Anti-Orc4 (S. pombe) antibody