

Anti-Mcm6 / Mis5 (*S. pombe*) antibody, rabbit polyclonal

63-023 100 µl

Shipping and Storage: Ship at 4°C and store at -20°C.

Immunogen: Recombinant His6 tagged 43-458 amino acids of *S. pombe* Mcm6 / Mis5 protein.

Reactivity: Reacts with *S. pombe* Mcm6 / Mis5 protein (MW: 95.5 k).

Applications:

1. Western blotting (1/500-1/1,000)
2. Immunoprecipitation (1/100 -1/300)
3. Chromatin Immuno-Precipitation (Assay dependent)
4. Immuno-Fluorescence Staining (Assay dependent)

Form: Anti-Mcm6 antiserum added with sodium azide, 0.09 %.

Background: Mcm6 acts as a component of Mcm2-7 complex which is the putative replicative helicase essential for 'once per cell cycle' DNA replication initiation and elongation in eukaryotic cells.

Subcellular location: Nucleus

Data Link: UniProtKB [P49731](#) (*S. pombe*)

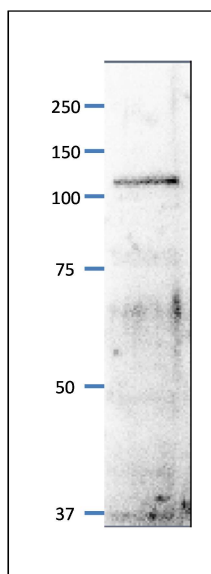


Fig.1 Western Blot of Mcm6 / Mis5 protein

Anti-Mcm6 / Mis5 antibody was used at 1/500 dilution. Second antibody (goat anti-rabbit IgG antibody HRP-conjugated, ab97051) was used at 1/10,000 dilution. *S. pombe* extract, 8 µg.

The antibody detects a protein band of 110 kDa, slightly larger than the one predicted from the protein sequence 95.5kDa (Ref. Ogawa Y et al)

References: This product has been used in the following publications.

Hayashi M et al. Genome-wide localization of pre-RC sites and identification of replication origins in fission yeast. *EMBO J.* 2007, Mar;26(5): 1327-39. PMID: [17304213](#) .ChIP (*S. pombe*)

Nakajima R, Masukata H. SpSld3 is required for loading and maintenance of SpCdc45 on chromatin in DNA replication in fission yeast. *Mol. Biol. Cell.* 2002, May;13(5):1462-72. PMID: [12006645](#) **WB, IP (S. pombe)**

Ogawa Y et al. Association of Fission Yeast Orp1 and Mcm6 Proteins with Chromosomal Replication Origins. *Mol. Cell. Biol.* 1999, Oct;19(10):7228-36. PMID: [10490657](#) **WB, IP, IF (S. pombe)**

Related Products:

- 63-020 Anti-Mcm2 (S. pombe) antibody
- 63-021 Anti-Mcm3 (S. pombe) antibody
- 63-022 Anti-Mcm5 (S. pombe) antibody
- 63-024 Anti-Mcm7 (S. pombe) antibody
- 63-030 Anti-Psf1 (S. pombe) antibody
- 63-032 Anti-Psf3 (S. pombe) antibody
- 63-035 Anti-Sld5 (S. pombe) antibody
- 63-037 Anti-Ssb2 / Rpa2 (S.pombe) antibody
- 63-041 Anti-Orc2 (S. pombe) antibody
- 63-043 Anti-Orc4 (S. pombe) antibody
- 63-050 Anti-Cdc45 Sna41 (S. pombe) antibody