

Anti-Mcm7 (*S. pombe*) antibody, rabbit polyclonal

63-024 100 µg

Shipment and Storage: Ship at 4°C and store at -20°C. Do not freeze below -20°C

Immunogen: Recombinant His6 1-207 amino acids of *S. pombe* Mcm7.

Reactivity: React with *S. pombe* Mcm7 protein

Applications:

1. Western blot (1/1,000-1/2,000)

Form: 2 mg/ml. IgG, affinity-purified with Protein A.

Background: Mcm7 acts as a component of mcm2-7 complex which is the putative replicative helicase essential for 'once per cell cycle' DNA replication initiation and elongation in eukaryotic cells. Calculated molecular mass: 85.6 kDa

Subcellular location: Nucleus

Data Link: UniProtKB [75001](#)(*S. pombe* Mcm7)

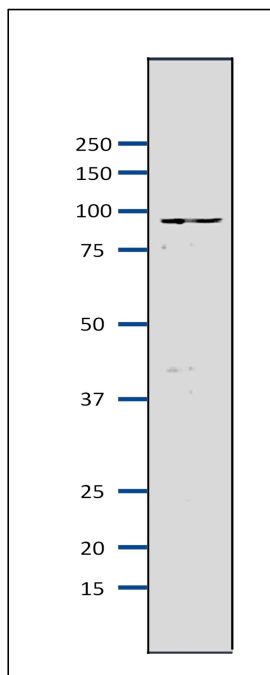


Fig.1 Western blot of Mcm7 protein in *S. pombe* crude extract
Anti-Mcm7 antibody was used at 1/2000 dilution. Second antibody (goat anti-rabbit IgG antibody, HRP-conjugated, ab97051) was used at 1/10,000 dilution. *S. pombe* extract, 8 µg.

References: This product has been used in the following publications.

Yamada Y et al. A Novel Intermediate in Initiation Complex Assembly for Fission Yeast DNA Replication. *Mol Biol Cell*. 2004, Aug;15(8): 3740-50. PMID: [15194812](#). **WB: *S. pombe***

Related Products.

63-020 Anti-Mcm2 (*S. pombe*) antibody
63-021 Anti-Mcm3 (*S. pombe*) antibody
63-022 Anti-Mcm5 (*S. pombe*) antibody
63-023 Anti-Mcm6 (*S. pombe*) antibody
63-030 Anti-Psf1 (*S. pombe*) antibody
63-032 Anti-Psf3 (*S. pombe*) antibody
63-035 Anti-Sld5 (*S. pombe*) antibody
63-037 Anti-Ssb2 Rpa2 antibody
63-041 Anti-Orc2 (*S. pombe*) antibody
63-043 Anti-Orc4 (*S. pombe*) antibody