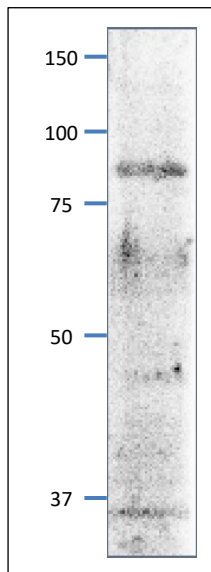


**Anti-Mcm3 (*S. pombe*) antibody, rabbit polyclonal**

63-021 100 µl

**Shipping and Storage:** Ship at 4°C and store at -20°C.**Immunogen:** Recombinant His6 1-217 amino acids of *S. pombe* Mcm3.**Reactivity:** React with *S. pombe* Mcm3 protein (MW: 97.5).**Applications:**

1. Western blot (1/1000-1/2000 dilution)

**Form:** Whole anti-Mcm3 serum added with sodium azide ,0.09 %.**Background:** Mcm3 acts as a component of mcm2-7 complex which is the putative replicative helicase essential for 'once per cell cycle' DNA replication initiation and elongation in eukaryotic cells.**Subcellular location:** Nucleus**Data Link:** UniProtKB [30666](#) (*S. pombe* Mcm3)

**Fig.1 Western blot of Mcm3 protein in *S. pombe* crude extract**  
Anti-Mcm3 antibody was used at 1/2000 dilution. Second antibody (goat anti-rabbit IgG antibody, HRP-conjugated, ab97051) was used at 1/10,000 dilution. *S. pombe* extract, 8 µg.