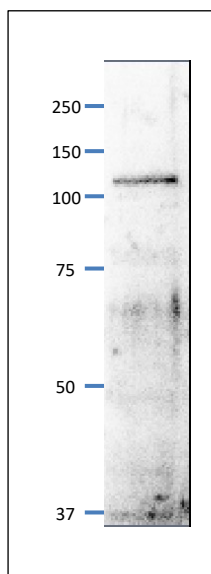


**Anti-Mcm6 / Mis5 (*S. pombe*) antibody, rabbit polyclonal**

63-023 100 µl

**Shipping and Storage:** Ship at 4°C and store at -20°C.**Immunogen:** Recombinant His6 tagged 43-458 amino acids of *S. pombe* Mcm6 / Mis5 protein.**Reactivity:** Reacts with *S. pombe* Mcm6 / Mis5 protein (MW: 95.5 k).**Applications:**

1. Western blotting (1/500-1/1,000)
2. Immunoprecipitation ( 1/100 -1/300)
3. Chromatin Immuno-Precipitation (Assay dependent)
4. Immuno-Fluorescence Staining (Assay dependent)

**Form:** Anti-Mcm6 antiserum added with sodium azide, 0.09 %.**Background:** Mcm6 acts as a component of Mcm2-7 complex which is the putative replicative helicase essential for 'once per cell cycle' DNA replication initiation and elongation in eukaryotic cells.**Subcellular location:** Nucleus**Data Link:** UniProtKB [P49731](#) (*S. pombe*)**Fig.1 Western Blot of Mcm6 / Mis5 protein**

Anti-Mcm6 / Mis5 antibody was used at 1/500 dilution. Second antibody (goat anti-rabbit IgG antibody HRP-conjugated, ab97051) was used at 1/10,000 dilution. *S. pombe* extract, 8 µg.

The antibody detects a protein band of 110 kDa, slightly larger than the one predicted from the protein sequence 95.5kDa (Ref. Ogawa Y et al)

**References:** This product has been used in the following publications.

Hayashi M et al. Genome-wide localization of pre-RC sites and identification of replication origins in fission yeast. *EMBO J.* 2007, Mar;26(5): 1327-39. PMID:

[17304213](#) .ChIP: *S. pombe*

Nakajima R, Masukata H. SpSld3 is required for loading and maintenance of SpCdc45 on chromatin in DNA replication in fission yeast. *Mol. Biol. Cell.* 2002, May;13(5):1462-72. PMID: [12006645](#) **WB, IP: S. pombe**

Ogawa Y et al. Association of Fission Yeast Orp1 and Mcm6 Proteins with Chromosomal Replication Origins. *Mol. Cell. Biol.* 1999, Oct;19(10):7228-36. PMID: [10490657](#) **WB, IP, IF: S. pombe**