

Anti-Psf1 (*S. pombe*) antibody, rabbit polyclonal

63-030 100 µg

Shipping and Storage: Ship at 4°C and store at -20°C.

Immunogen: Recombinant His6 1-202 amino acids of *S. pombe* Psf1 protein.

Reactivity: Reacts with *S. pombe* Psf1 protein (MW: 23.1 k).

Applications:

1. Western blotting (1/500-1/1,000)
2. Immunofluorescence staining (Assay dependent)

Form: Anti-Psf1 antiserum added with sodium azide, 0.09 %.

Background: Psf1 is a component of GINS complex which is required for the initiation and elongation stages of DNA replication. Psf1 is required for maintenance, as well as establishment of Cdc45 binding and chromatin association of the Dpb4 subunit of Polε.

Subcellular location: Nucleus

Data Link: UniProtKB [Q9P7X6](#) (*S. pombe* Psf1)

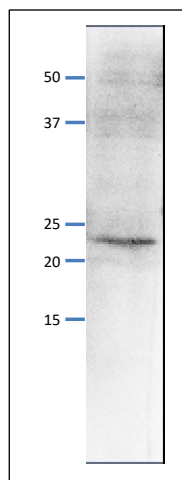


Fig.1 Western Blot of endogenous Psf1 protein

Anti-Psf1 antibody was used at 1/500 dilution. Second antibody (goat anti-rabbit IgG antibody, HRP-conjugated, ab97051) was used at 1/10,000 dilution. *S. pombe* extract, 8 µg.

The antibody detects the 23 kDa band, corresponding to the predicted molecular mass of Psf1 protein.

References: This product has been used in the following publications.

Yabuuchi H et al. Ordered assembly of Sld3, GINS and Cdc45 is distinctly regulated by DDK and CDK for activation of replication origins. *EMBO J.* 2006, Oct;25(19):4663-74. PMID: [16990792](#). **WB: *S.pombe***

Pai CC, García I, Wang SW, Cotterill S, Macneill SA, Kearsley SE. GINS inactivation phenotypes reveal two pathways for chromatin association of replicative alpha and epsilon DNA polymerases in fission yeast." *Mol. Biol. Cell.* 2009, Feb;20(4):1213-22. PMID: [19109429](#). **IF: *S.pombe***