

Anti-alpha Tubulin antibody, mouse monoclonal (3A1)

70-102 100 µg

Shipping and Storage: Ship at 4°C and store at -20°C. Do not freeze

Immunogen: Recombinant human alpha Tubulin (full-size).

Reactivity: Reacts with Human, Mouse, Rat, Hamster, Xenopus, C. elegans.

Applications:

Western blot (1/1000-1/2000)

Immunofluorescent staining (1/500)

ELISA (assay dependent)

Purity: Affinity-purified with protein A from serum-free culture of hybridoma

Form: 1 mg /ml in PBS, 50% glycerol. Sterilized by ultrafiltration.

Background: Tubulin is the major constituent of microtubules. It binds two moles of GTP, one at an exchangeable site on the beta chain and one at a non-exchangeable site on the alpha chain.

Subcellular localization: Cytoskelton

Data Link: UniProtKB: [Q71U36](#) (human)

Reference: This antibody has not been cited in publication yet.

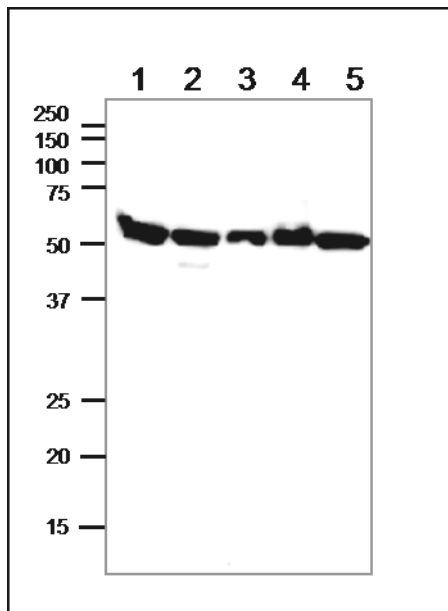


Fig.1 Western blot of alpha Tubulin in crude cell extracts

Samples

1. HeLa (human), 10 µg

2. MCF7 (human), 13.5 µg

3. CHO (hamster), 10 µg

4. NIH3T3 (mouse), 10 µg

5. B16 mouse melanoma, 11 µg

The anti-alpha Tubulin antibody was used at 1/1,000 dilution and as the second antibody, HRP-conjugated goat anti-mouse IgG (ab205719) was used at 1/20,000 dilution.

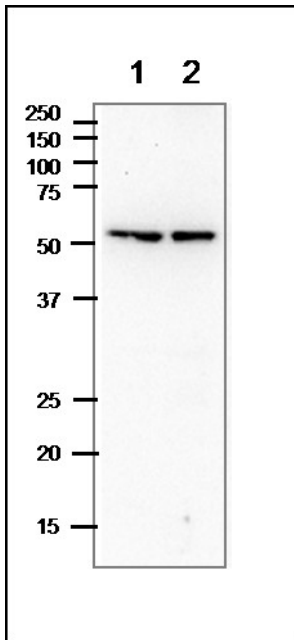


Fig.2 Western blot of alpha Tubulin in crude cell extracts

Samples

1. Xenopus egg, 70 μ g

2. *C. elegans*, 13.5 μ g

The anti-alpha Tubulin antibody was used at 1/1,000 dilution and as the second antibody, HRP-conjugated goat anti-mouse IgG (ab205719) was used at 1/20,000 dilution.

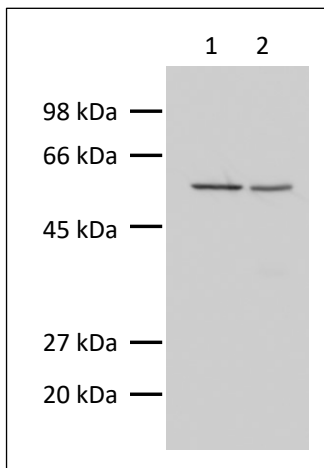


Fig.3 Western blot of alpha Tubulin in crude extracts

Samples

1. HeLa cell, 10 μ g

2. Mouse liver extract, 10 μ g

The anti-alpha Tubulin antibody was used at 1/5,000 dilution and as the second antibody, HRP-conjugated goat anti-mouse IgG (ab205719) was used at 1/20,000 dilution.

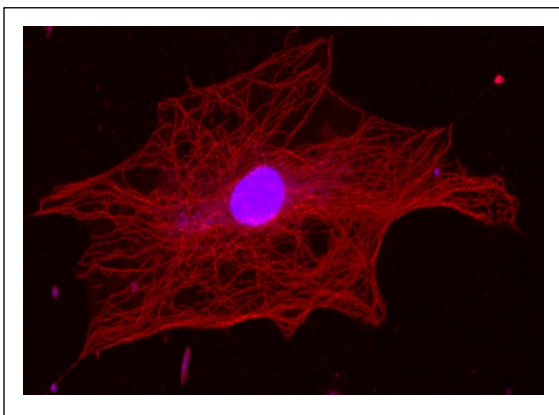


Fig.4 Immunofluorescence staining of alpha Tubulin

NIH3T3 cells were fixed with 4% formaldehyde, permeabilized in 0.1% Triton X-100 and then blocked in 1% in 0.1% PBS-Tween. The cells were incubated with the anti-alpha Tubulin antibody at 1/500 dilution followed by incubation with an Alexa546 rabbit anti-mouse IgG secondary antibody at 2 μ g/ml (red). Nuclear DNA was labelled with DAPI.