

Anti-Orc2 (*S. pombe*) antibody, rabbit polyclonal

63-041 100 µg

Shipment and Storage: Ship at 4°C and store at -20°C. Do not freeze below -20°C**Immunogen:** Recombinant His6 1-175 amino acids of *S. pombe* Orc2.**Reactivity:** Reacts with *S. pombe* Orc2 protein**Applications:**

1. Western blot (1/2,000- dilution)
2. ImmunoPrecipitation (1/200)
3. Chromatin ImmunoPrecipitation

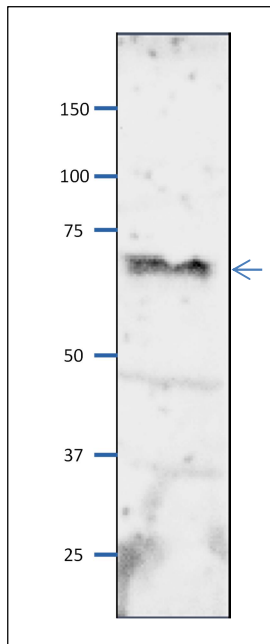
Form: 2 mg/ml. IgG, affinity-purified with Protein A.**Background:** Component of the origin recognition complex (ORC) that binds origins of replication. It has a role in both chromosomal replication and mating type transcriptional silencing. ORC binds to multiple sites within the ars1 origin of DNA replication in an ATP-independent manner. Predicted molecular mass 61. kDa. 535 amino acids**Subcellular location:** Nucleus**Data Link:** UniProtKB [Q09142](http://www.uniprot.org/entry/Q09142) (*S. pombe* Orc2)

Fig.1 Western blot of Orc2 protein in *S. pombe* crude extract
Anti-Orc2 antibody was used at 1/2000 dilution. Second antibody (goat anti-rabbit IgG antibody, HRP-conjugated, ab97051) was used at 1/10,000 dilution. *S. pombe* extract, 8 µg.

References: This product has been used in the following publications.

Takahashi T et al. Multiple ORC-binding sites are required for efficient MCM loading and origin firing in fission yeast. EMBO J. 2003, Feb;22 (4): 964-74. PMID:

[12574132](http://pubmed.ncbi.nlm.nih.gov/12574132/). ChIP, IP ; *S. pombe*

Related Products.

- 63-020 Anti-Mcm2 (S. pombe) antibody
- 63-021 Anti-Mcm3 (S. pombe) antibody
- 63-022 Anti-Mcm5 (S. pombe) antibody
- 63-023 Anti-Mcm6 (S. pombe) antibody
- 63-024 Anti-Mcm7 (S. pombe) antibody
- 63-030 Anti-Psf1 (S. pombe) antibody
- 63-032 Anti-Psf3 (S. pombe) antibody
- 63-035 Anti-Sld5 (S. pombe) antibody
- 63-037 Anti-Ssb2 / Rpa2 (S.pombe) antibody
- 63-043 Anti-Orc4 (S. pombe) antibody