

## Anti-NAI2 antibody, C-terminal, rabbit polyclonal

81-104 200 µg

**Storage:** Ship at 4°C and store at -20°C. Do not freeze below -20°C.

**Reactivity:** NAI2 protein of *Arabidopsis thaliana*. Not tested in other species.

**Validation of specificity:** Specific reactivity has been validated by western blot using *nai1* mutant extracts.

**Immunogen:** Recombinant His6-tagged C-terminal of NAI2 (amino acids 636-772) (*A. thaliana*).

### Applications:

1. Western blotting (1/2,000-1/4,000)

**Form:** 2 mg/ml in PBS, 50% glycerol. Filter-sterilized. No preservative or carrier protein

**Purity:** IgG fraction purified by protein A affinity-chromatography from the rabbit antiserum

**Background:** Responsible for the ER body formation. Regulates the number and shape of the ER bodies and the accumulation of PYK10 in ER bodies, but is not involved in the expression of PYK10. Interacts directly or indirectly with MEB1 and MEB2.

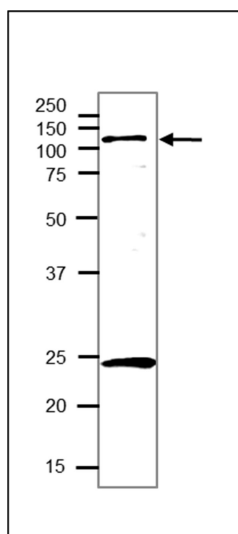
Expressed in roots. Detected in shoot apex. Induced by NAI1. Length: 772 amino acids.

Predicted molecular mass: 85,016

**Subcellular location:** Endoplasmic reticulum lumen.

**Modification:** Elimination of 24-amino acid signal peptide from N-terminus.

**Data Link:** UniProtKB [Q9LSB4](http://www.uniprot.org/entry/Q9LSB4)(NAI2\_ARATH)



**Fig.1 Western Blot of NAI2 in extract of arabidopsis seedling**

Crude extract of 7 day old seedling of *Arabidopsis thaliana* was run on 12.5% SDS-PAGE and blotted overnight to PVDF membrane by wet system. Blocking was done with 3% skim milk. Anti-NAI2 antibody (C-terminal) was used at 1/2,000 dilution. Secondary antibody (goat anti-rabbit IgG antibody HRP-conjugated, ab97051) was used at 1/10,000 dilution.

**Reference:** This antibody has been described and used in the following publication.

1. Yamada K et al. NAI2 is an endoplasmic reticulum body component that enables ER body formation in *Arabidopsis thaliana*. [Plant Cell](#). 2008 Sep;20(9):2529-40. PMID: [18780803](#) WB (arabidopsis)

#### Related Products

81-101 Anti-MEB1 antibody, rabbit polyclonal.

81-102 Anti-MEB2 antibody, rabbit polyclonal

81-103 Anti-NAI2 ( $\Delta$  SP) antibody, rabbit polyclonal